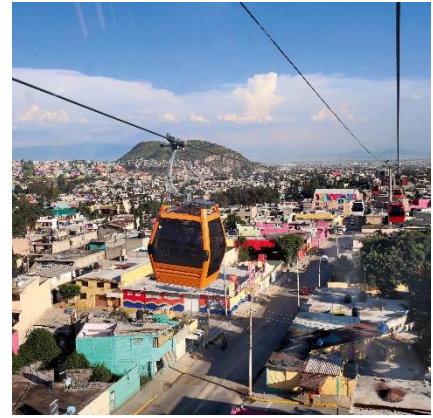




---

PRESSrelease



---

PRESSrelease

**LEITNER**<sup>®</sup>  
ropeways

---

## From the highest peak to the liveliest part of town – LEITNER ropeways takes you around the world

What started with the founding of the company over 130 years ago is still moving people across the world. LEITNER ropeways systems are the best possible mobility solutions for the most diverse requirements thanks to their unique attributes. This is because as one of the world's leading developers and producers of ropeway transport systems – LEITNER ropeways uses a tried and tested successful concept which impresses customers time and again. This is due to maximum comfort as well as development of modern technologies and continuous work to produce innovations and high-quality product design.

Be it groundbreaking collaboration with the Italian design studio Pininfarina, the success of the internally developed LEITNER DirectDrive system or the visionary functionality of the LeitControl system – at LEITNER ropeways the focus is always on quality, innovation and uncompromising functionality. With its products, the company demonstrates its qualities as a premium provider, while also responding individually to a wide range of customer requirements.

The latest showcase projects include the tricable gondola lift at Klein Matterhorn in Zermatt (CH). The highest 3S gondola lift in the world was put into operation in autumn 2018 and is extremely impressive on account of a special highlight: Some of the cabins are decorated with Swarovski® crystal beads in an exterior design created specifically for the new ropeway. The modern system with Pininfarina-designed cabins makes the trip to the Matterhorn glacier paradise far faster and more comfortable. The gondola lift is designed to supplement the existing aerial tramway, and increases the transport capacity to the highest ropeway mountain station in Europe by 2,000 passengers per hour. The Matterhorn glacier ride also laid the foundation for the planned Alpine Crossing – the future link between the areas of Zermatt (Switzerland) and Cervinia (Italy), which will be available to pedestrians all year round.

Scandinavia's first tricable gondola lift will be completed within summer 2019 in the Norwegian tourist destination of Voss. In addition to the high transport capacity for the Hanguren mountain ski resort, the two-kilometer-long ropeway from summer 2019 on will also bring about tangible relief at the location. The valley station will be integrated into the redesigned railway station which includes a new bus station, and a central transport hub will be established close to the center of the town.

The station designed by Pininfarina as well as the elegant symphony cabins also provide perfect design and technical top performance from the valley to the mountain. LEITNER ropeways' premium set is used amongst other things in the world-famous Kitzbühel ski resort.

Away from the mountains the ropeway is celebrating a real highlight as a means of transport in an urban area. In 2016 for instance, LEITNER ropeways attracted attention with its construction of a system in Mexico City. The first urban ropeway system in the country consists of two gondola lifts and is helping to solve traffic problems in the densely populated Ecatepec de Morelos district of the capital.

In addition to the major benefits of a public transport the gondola lift makes an impression in cities as a tourist infrastructure facility. Since April 2018, a 10-passenger gondola lift brings tourists and local residents directly from the center of Bosnia's capital quickly and comfortably to the 1,160 meter summit of Trebević. In Turkey, a reversible aerial tramway runs from the tourist destination Beşikdüzü to the panoramic mountain Beşikdağ. Thanks to the construction of the new aerial tramway, the tourism region just 40 km from the provincial capital Trabzon will now boast a star attraction visible from afar.

The "Gardens of the World" ropeway, which was constructed at the time of the International Garden Exhibition in Berlin in 2017, is also an impressive actual example of successful urban and tourist use of LEITNER ropeways products.

## **LEITNER ROPEWAYS**

LEITNER ropeways is part of the High Technology Industries Group, which also includes the brands PRINOTH (snow groomers and tracked utility vehicles), DEMACLENKO (snow making systems), POMA (passenger ropeways), AGUDIO (material ropeways), LEITWIND (wind power plants) and MINIMETRO (cable-hauled railway vehicles). The divisions of LEITNER ropeways are Winter Sports, Tourism, Urban Passenger Transport, and Material Transport. The headquarters of the company, which was founded in 1888, are in Vipiteno (BZ), South Tyrol/Italy. Ropeway production sites are located in Italy, Austria, France, Slovakia, the USA and China. [www.leitner.com](http://www.leitner.com)

## **Press Contacts:**

LEITNER ropeways  
Daniela Innerhofer  
Marketing  
Via Brennero 34  
I-39049 Vipiteno (BZ)  
Tel. +39 0472 722 444  
[daniela.innerhofer@leitner.com](mailto:daniela.innerhofer@leitner.com)  
<https://www.leitner.com/en/press/>

LEITNER ropeways  
Maurizio Todesco  
Company spokesperson  
Via Brennero 34  
I-39049 Vipiteno (BZ)  
Tel. +39 0472 722 115  
Mobile +39 335 7722259  
[maurizio.todesco@leitner.com](mailto:maurizio.todesco@leitner.com)