



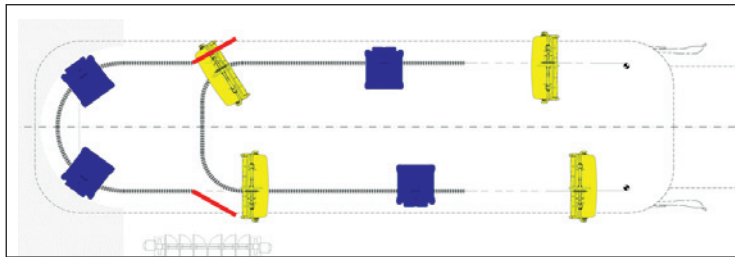
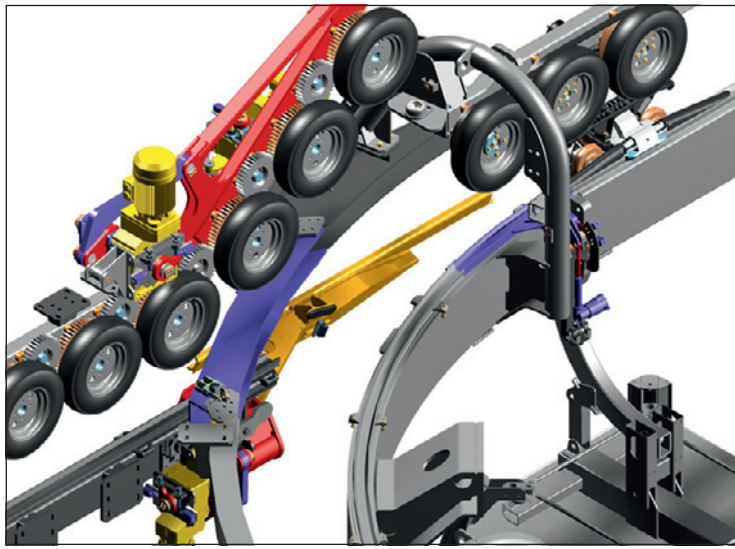
The Quick Switch

The LEITNER solution for flexible operating procedures

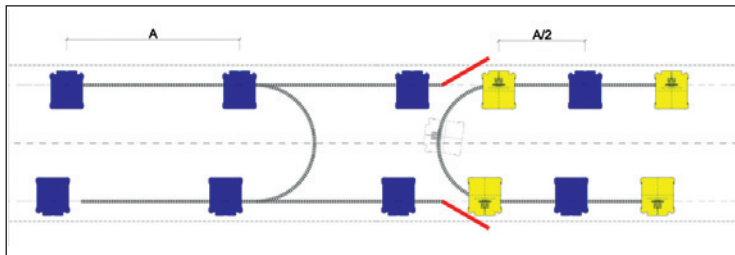
Basis The Quick Switch was designed and constructed to enable a reduction of the switching time to 2 seconds max. This allows steering the vehicles onto different tracks during ongoing operation without having to turn the ropeway off or having to reduce the operating speed.

Description Employing a Quick Switch allows adjusting the transport capacity during ropeway operation. With it, the operator can always keep the installation in its optimal utilization by reacting flexibly to changes in transport capacity that may occur while the ropeway is in service (sudden onset of bad weather, transport capacity peaks of connecting installations). This not only minimizes wear and tear on components, but also reduces energy costs.

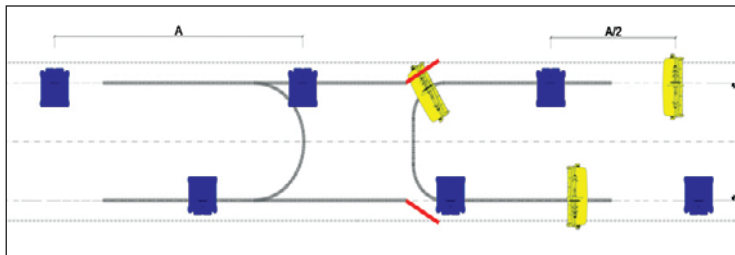
Further application options are double-loading areas for chairlifts with maximum transport capacities and/or separate loading areas for gondola and chair in Telemix ropeways. In multi-section installations, using the Quick Switch enables trouble-free realization of different transport capacities on individual sections or variations in the vehicle placement of the sections (chair/gondola partitioning in Telemix ropeways).



Double-loading area



Middle station with varying transport capacities



Middle station with varying placement of vehicles

Technical data

Switching time 2 s max.

Required pitch at least 9 s

Switching cycles at least 5,000,000